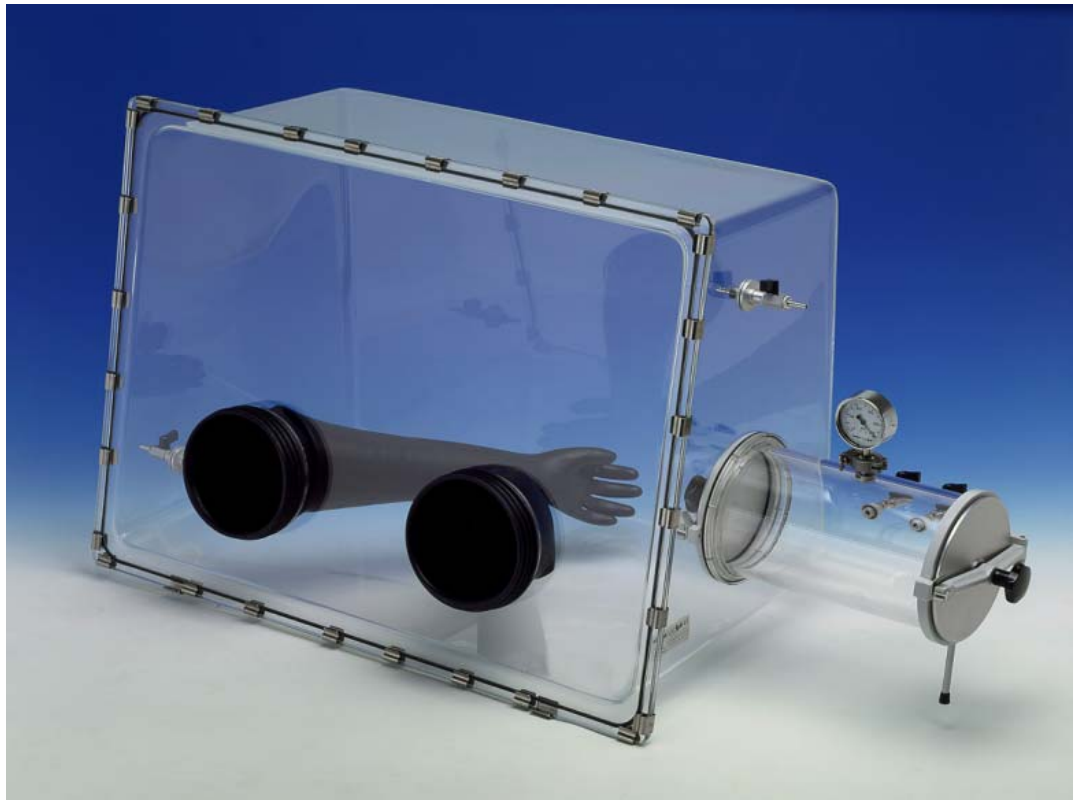




MB GB-2202-S

**Single piece molded Glovebox
with antechamber**



- Unique single piece molded design of box body
- No glue or clamps on the body of the box
- Easy to open or remove clamped front window
- Variety of glove options, standard is Neoprene
- Ball valves for gas purge and exhausting of the box
- Acrylic glass antechamber $\varnothing 290$ mm with ball valves and vacuum gauge for vacuum / purge transfers
- Bench top system

MB GB-2202-S

Standard Glovebox made of acrylic glass MB GB-2202-S with removable front window and evacuable antechamber ø 290mm

Article no. 7049381

Basic equipment	Technical data
<p>Glovebox</p> <ul style="list-style-type: none">• Single piece molded housing• Removable front window made of acrylic glass, with 2 glove ports• Pair of gloves made of Neoprene, size 8, lh/rh• Rubber ring fasteners for securing of gloves• Window clamps• Ball valve G 1/4", with 2 hose connections, for gas inlet and outlet of the Glovebox <p>Basics</p> <ul style="list-style-type: none">• The Glovebox can be operated either:<ul style="list-style-type: none">- at a negative pressure down to: -2,5 mbar- at a positive pressure up to: 2,5 mbar	<p>Glovebox properties</p> <ul style="list-style-type: none">• Length: 950mm• Depth below: 540mm• Depth above: 420mm• Height: 650mm • Volume of Glovebox: 300l • Weight: 25kg
<p>Antechamber</p> <ul style="list-style-type: none">• Evacuatable antechamber made of acrylic glass, with 2 horizontally opening doors made of aluminum, including:<ul style="list-style-type: none">- Ball valve G 1/4", with hose connections, to be connected to a vacuum pump- Ball valve G 1/4", with hose connections, for gas purging of the ante-chamber- Vacuum gauge <p>Basics</p> <ul style="list-style-type: none">• The antechamber can be evacuated into the fine-vacuum range, up to a pressure of less than 1 mbar absolute	<p>Antechamber properties</p> <ul style="list-style-type: none">• Diameter: 290mm• Length: 350mm • Volume of antechamber: 22l
	<p>Options:</p> <ul style="list-style-type: none">• Electrical power feedthrough, single and multiple internal connections• Low voltage feedthrough• Stainless steel floor pan• Internal and external covers for glove ports• Automated pressure regulation• Lighting options



M. Braun Inertgas-Systeme GmbH Head-Office Germany • Dieselstr. 31, D-85748 Garching • Phone: +49(0) 89-3 26 69-0

Fax: +49(0) 89-3 26 69-105 • E-Mail: info@mbraun.de

M. Braun Inc. USA • 14 Marin Way, Stratham, NH 03885 • Phone: +1-603-773-9333 • Fax: +1-603-773-0008 • E-Mail: info@mbraunusa.com

M. Braun Inertgas Systems (Shanghai) Co., Ltd. China • 828 Xin Jinqiao Road • Pudong Shanghai 201206, P.R.C.

Phone: +86-21-50320257 • Fax +86-21-50320229 • E-Mail: info@mbraunchina.com

M. Braun Service Japan • Yoshikawa building, 3rd floor • 6-32 Honcho, Wako-shi • Saitama 351-0114 • Phone: +81-48-452-6367 • Fax: +81-48-452-6368

Internet www.mbraun.de • www.mbraunusa.com • www.mbraunchina.com